

GENERAL

All models have an automatic chain tensioner. For primary chain service procedures, see [6.3 DRIVE COMPONENTS](#).

CHANGING PRIMARY CHAINCASE LUBRICANT

1. Run motorcycle until engine is warmed up to normal operating temperature.

CAUTION

When draining or adding lubricant, do not allow dirt, debris or other contaminants to enter the engine. (00198a)

WARNING

Be sure that no lubricants or fluids get on tires, wheels or brakes when changing fluid. Traction can be adversely affected, which could result in loss of control of the motorcycle and death or serious injury. (00047d)

2. See [Figure 1-14](#). Remove magnetic drain plug at bottom of primary chaincase. Drain lubricant into suitable container.

NOTE

Dispose of lubricant in accordance with local regulations.

3. Clean drain plug. If plug has accumulated a lot of debris, inspect the condition of chaincase components.
4. Install **new** o-ring on drain plug.
5. Install drain plug back into primary chaincase cover. Tighten plug to 14-21 ft-lbs (19.0-28.5 Nm).
6. See [Figure 1-15](#). Remove five TORX screws with captive washers (3) to detach clutch inspection cover (2) from primary chaincase cover.
7. Remove the seal (1). Wipe oil from groove in chaincase cover and mounting surface.

CAUTION

Do not overfill the primary chaincase with lubricant. Overfilling can cause rough clutch engagement, incomplete disengagement, clutch drag and/or difficulty in finding neutral at engine idle. (00199b)

8. Refer to [Table 1-9](#). Pour the specified amount of GENUINE Harley-Davidson FORMULA+ TRANSMISSION AND PRIMARY CHAINCASE LUBRICANT (Part No. 99851-05 quart) in through the clutch inspection cover opening.

Table 1-9. Primary Chaincase Lubricant Refill Capacity

ITEM	CAPACITY
Primary chaincase lubricant	32 oz (0.95 L) wet
	40 oz (1.18 L) dry

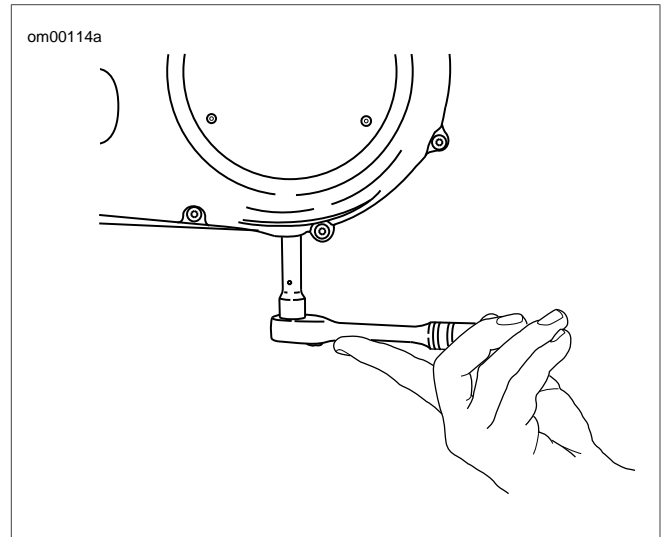
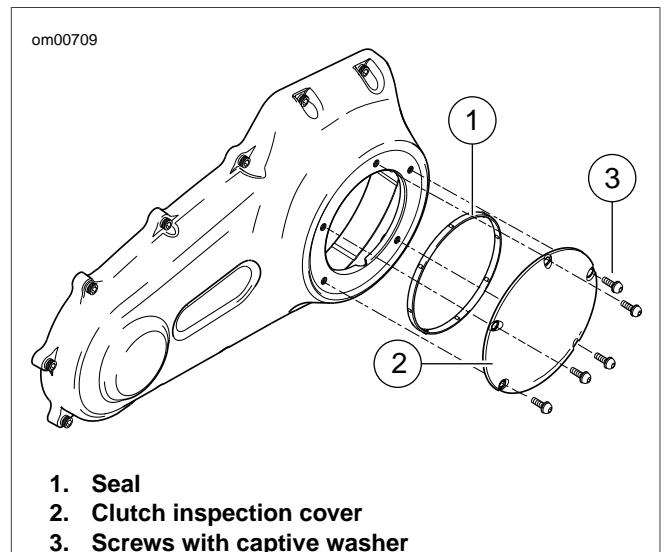


Figure 1-14. Removal/Installation of Chaincase Drain Plug



1. Seal
2. Clutch inspection cover
3. Screws with captive washer

Figure 1-15. Clutch Cover

9. Install clutch inspection cover and **new** seal as follows:
 - a. Thoroughly wipe all lubricant from cover mounting surface and groove in chaincase.
 - b. See [Figure 1-15](#). Position **new** seal (1) in groove in primary chaincase cover and press each of the nubs on seal into the groove. The nubs will retain seal in position.
 - c. See [Figure 1-16](#). Insert screw (with captive washer) through clutch inspection cover and carefully thread it into the top cover screw hole.
 - d. Start the remaining four screws (with captive washers).
 - e. Alternately tighten screws to 84-108 **in-lbs** (9.5-12.2 Nm) following torque sequence shown in [Figure 1-16](#).